

Executive Women's Golf Association

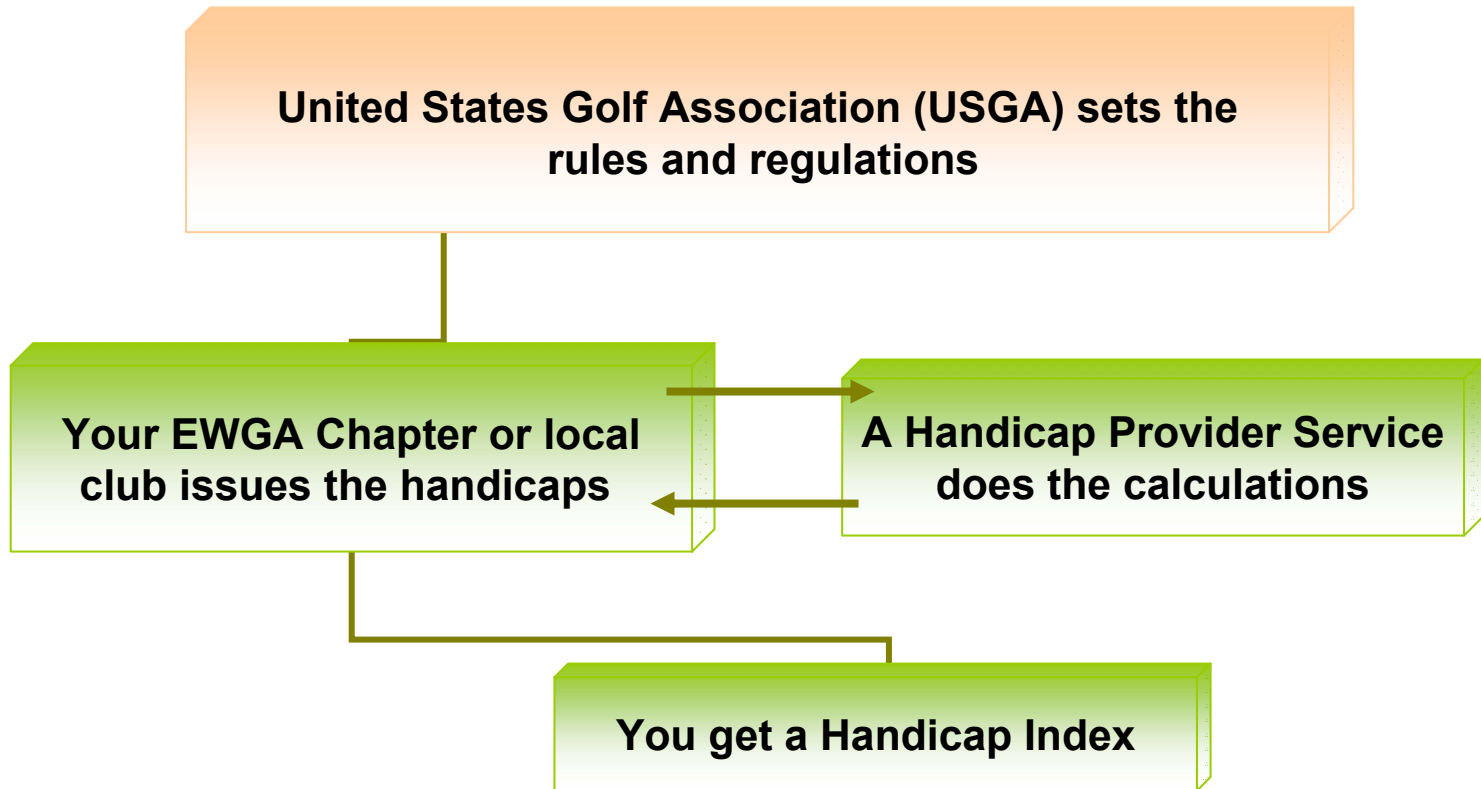
Handicaps and how
they can help you enjoy
the game of golf

Having a Handicap can make your game more fun!

- ***Handicaps level the playing field.*** Everyone comes to the first tee at the same level so when you win, it's because you played better that day, not because you're a better player all the time.
- ***Handicaps travel with you.*** The more difficult the course, the more handicap you get.
- ***Handicaps give you a method to track your progress.*** As you learn more and play more, you'll see your handicap go down.
- ***Handicaps allow you to play in tournaments.*** Many events require an official handicap. Having a handicap means you're ready to play!



Where do Handicaps come from?



Using your Handicap

- Your **Handicap Index** is the number issued to you and is always a one decimal point number like 38.7 or 22.5.
- Your **Course Handicap** is the number you play to and it is always a whole number like 27 or 35.
- A **Course Handicap Table** is used to convert your Handicap Index into a Course Handicap.
- Course Handicap Tables are located at every golf course and are specific to that particular course.
- There are separate Course Handicap Tables for women and men.

Handicap Index of 32.1 +

Course Handicap Table	
30.7 to 31.5	33
31.6 to 32.4	34
32.5 to 33.4	35

 = Course Handicap of 34

Handicap Strokes

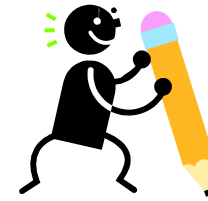
- Your Course Handicap tells you how many strokes you will receive. (Strokes are sometimes called “pops”)
- Every scorecard shows the Handicap Stroke Allocation for each hole. It will be a number between 1 & 18.
- For example: A player has a 28 handicap so she will receive 28 strokes, that’s one handicap stroke on every hole plus an additional stroke on the handicap holes #1 through #10.

18 strokes + 10 strokes = 28 strokes

HOLE	1	2	3	4	5	6	7	8	9	OUT	P	10	11	12	13	14	15	16	17	18	IN	TOT		
Gold 72.3/136	404	540	317	169	397	428	184	342	527	3308	L	307	500	193	359	401	377	171	441	523	3272	6580		
Blue 69.3/128	347	506	301	155	351	382	147	309	494	2992	A	280	480	171	287	362	351	167	407	502	3007	5999		
White 67.5/121	340	465	293	150	345	355	140	273	437	2798	Y	275	459	138	280	350	330	130	333	467	2762	5560		
Handicap	7	1	13	17	11	5	15	9	3		R	14	4	16	12	6	8	18	10	2				
Par	4	5	4	3	4	4	3	4	5	36		4	5	3	4	4	4	3	4	5	36	72		
Ladies' Handicap	11	1	13	15	9	7	17	5	3			10	4	16	14	8	12	18	6	2				
Red 69.7/122	322	453	264	113	289	260	84	268	432	2485		270	437	129	263	312	268	110	291	418	2498	4983		
Scorer:											Attest:											Date:		



Posting your scores



Posting is the term used for entering your scores into a computer so they can be used in the handicap calculation.

These are scores you should post

- Post scores from home and away courses.
- Post scores from all types of games including match play, stroke play and team competitions.
- Post all nine hole rounds and eighteen hole rounds. Nine hole scores will be automatically combined to form 18 hole rounds.
- Post when you play 7 out of 9 holes or 13 out of 18 holes.

When not to post



- You played less than 7 holes.
- The tournament restricted the clubs you used – such as an irons only competition.
- When an 18 hole course is less than 3000 yards or a 9 hole course is less than 1500 yards.
- A majority of the holes were not played according the Rules of Golf such as a scramble.
- The area in which you played is currently in an “inactive season”.

How to post



- The EWGA handicap system is internet based so you can post from any computer that has internet access.
- In order to post you need the name of the course, the date you played, the tees you played from and your total score.
- Your total score is the sum of the following:
 - The number of times you hit the ball.
 - The number of times you intended to hit the ball but missed it – yes, whiffs do count!
 - Any penalty strokes.
- Adjust your score for Equitable Stroke Control before posting.

Equitable Stroke Control (ESC)

- We all have some exceptionally bad holes from time to time so the rules give us a method of adjusting those scores.
- Using this chart, you can determine the maximum number of strokes you can have on any hole.
- All scores are reduced for ESC before posting – even tournaments.
- There is no limit to the number of holes on which a player may adjust their score.

Course Handicap	Maximum Number of Strokes
9 or less	Double bogie
10 through 19	7
20 through 29	8
30 through 39	9
40 and over	10

Uncompleted holes

You start but do not complete a hole

- Post the score you most likely would have gotten had you finished.
- You are the sole judge of what score you believe you would have gotten.
- Always adjust these holes for ESC.



You did not play every hole

- Post par plus any handicap strokes you get on that hole.
- For Example: You did not play the 18th hole and it's a par 4. You check the scorecard and find that it is the #5 handicap hole. You are a 30 handicap so you receive 2 handicap strokes on this hole.
Par 4 + 2 strokes = 6
You will post a 6 for this hole.

How to get started



- You need to post the **equivalent of 5 eighteen hole rounds** before you will be issued a Handicap Index.
- After posting a least 5 rounds, you must go past a **revision date**. A revision date is the day the handicap indexes are calculated. Each area/state has their own revision schedule. Revisions can be as often as every 2 weeks but must be done at least once a month.
- You also must be in an **active season** in order to post. If you live a northern or cold climate your season may be April through October. In a southern or warm climate, you may have a year-round season.
- See your Handicap Chair for information on your active season and revision schedule.

Revision Schedule for Minnesota

- Seasonal: April 15th to October 15th 2006
 - 4/15; 4/28;
 - 5/12; 5/26;
 - 6/9; 6/23;
 - 7/7; 7/21;
 - 8/4; 8/18;
 - 9/1; 9/15; 9/29;
 - 10/20

Get Ready to Play



EWGA MEMBER

Member ID 0082142

Jeannine Muse

EWGA South Jersey Chapter

WWW.EWGA.COM

Name: Muse, Jeannine

Club: EWGA South Jersey Chapter

Club #: 779 Member ID: 0082142

Effective Date: 10/21/2005 USGA HCP Index: 14.7

Attested Scores: 3% Home Course HCP: 17

SCORE HISTORY-MOST RECENT FIRST *IF USED

1	88AI*	91AI	83AI*	95AI	88AI*
6	91AI	88AI*	86AI*	88AI	88AI
11	83AI*	83AI*	84AI*	92AI	92AI*
16	88AI	94AI	87CI	91I	91AI*

Verify Handicap at www.EWGA.com

Once you meet the minimum requirements, you'll be issued your official USGA Handicap Index and your official Handicap Card.

You're ready to go...
**Grab your clubs, get to the links and
HAVE FUN!**